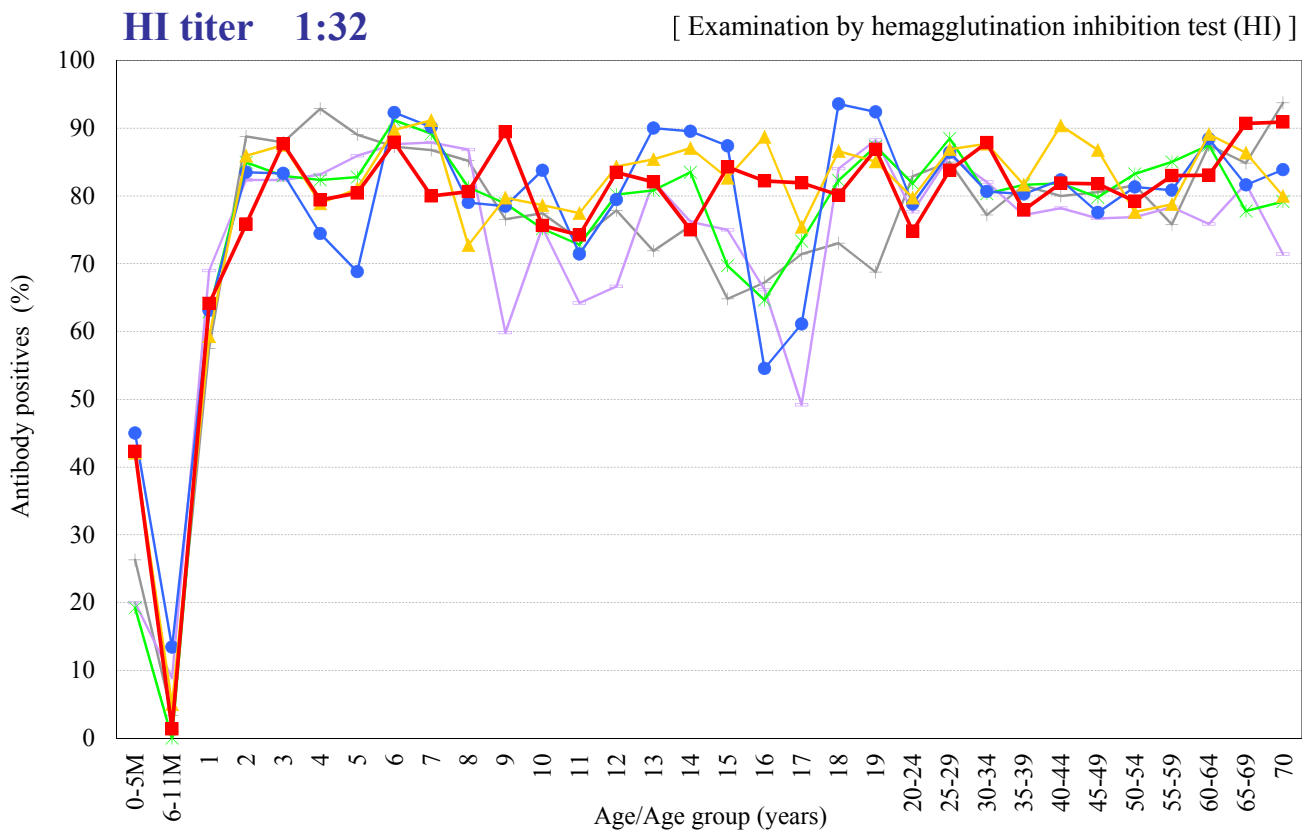
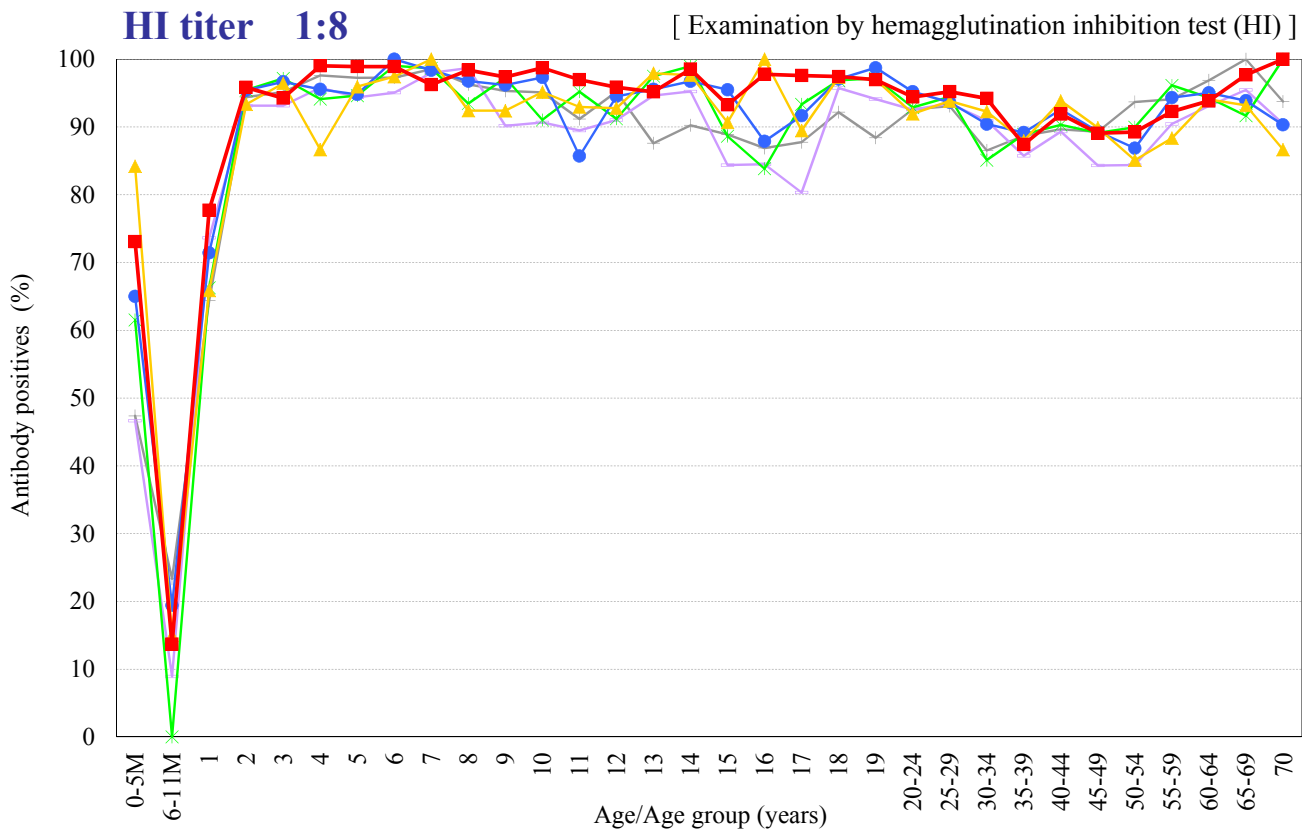


Age distribution of rubella HI antibody positives in Japan, 2008 ~ 2013

- National Epidemiological Surveillance of Vaccine-Preventable Diseases, 2013 -



Year — 2008 (n=4786) — 2009 (n=4557) — 2010 (n=5491) — 2011 (n=5269) — 2012 (n=5094) — 2013 (n=5524)