

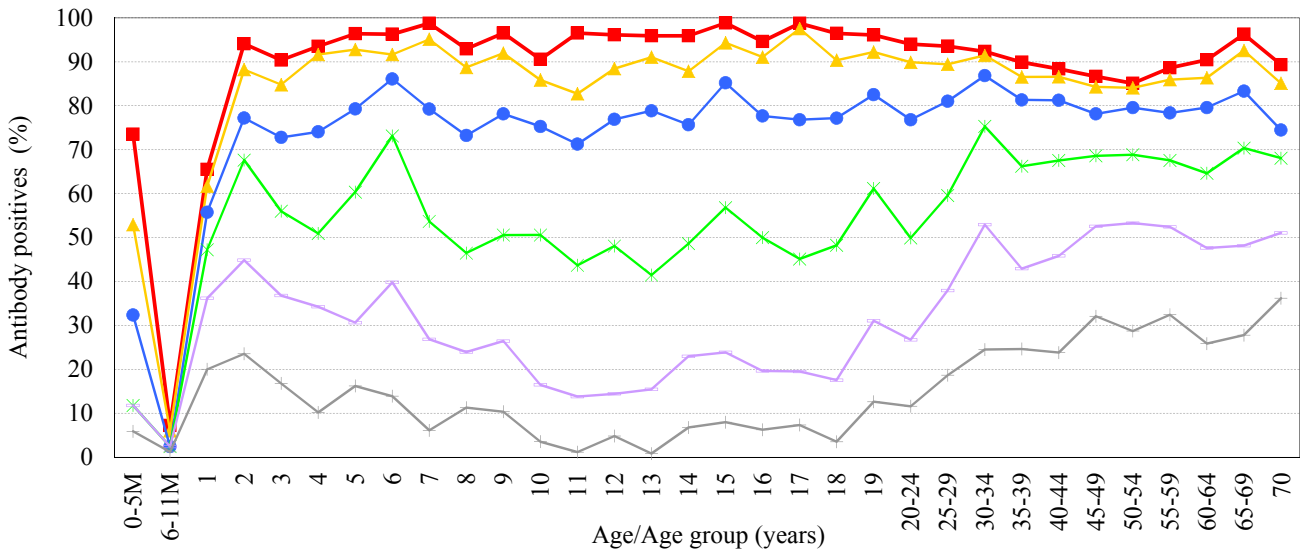
# Age distribution of rubella HI antibody positives in Japan, 2014

- National Epidemiological Surveillance of Vaccine-Preventable Diseases, 2014 -

(As of Mar. 2015)

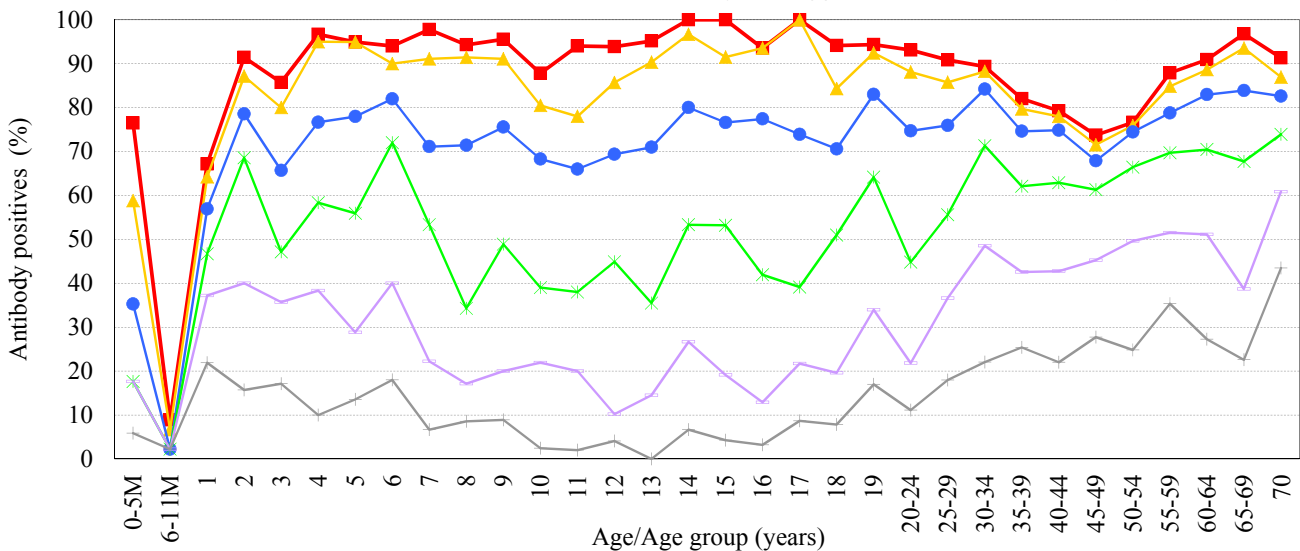
## Male & Female

[ Examination by hemagglutination inhibition test (HI) / n = 5743 ]



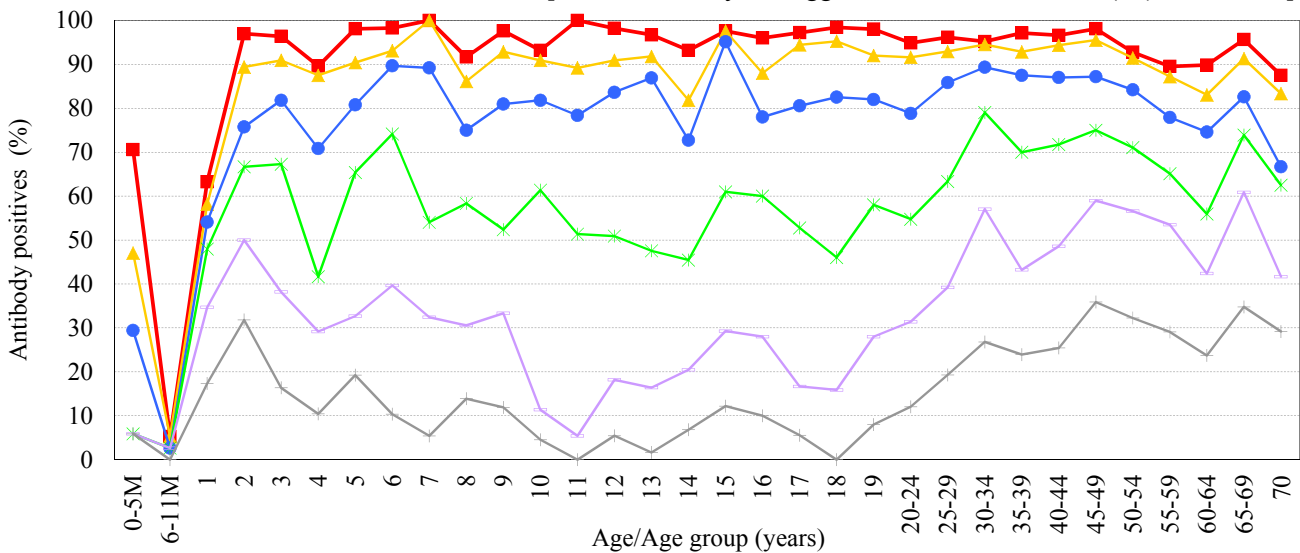
## Male

[ Examination by hemagglutination inhibition test (HI) / n = 2882 ]



## Female

[ Examination by hemagglutination inhibition test (HI) / n = 2861 ]



HI titer    ■ 1:8    ▲ 1:16    ● 1:32    \* 1:64    + 1:128    × 1:256