

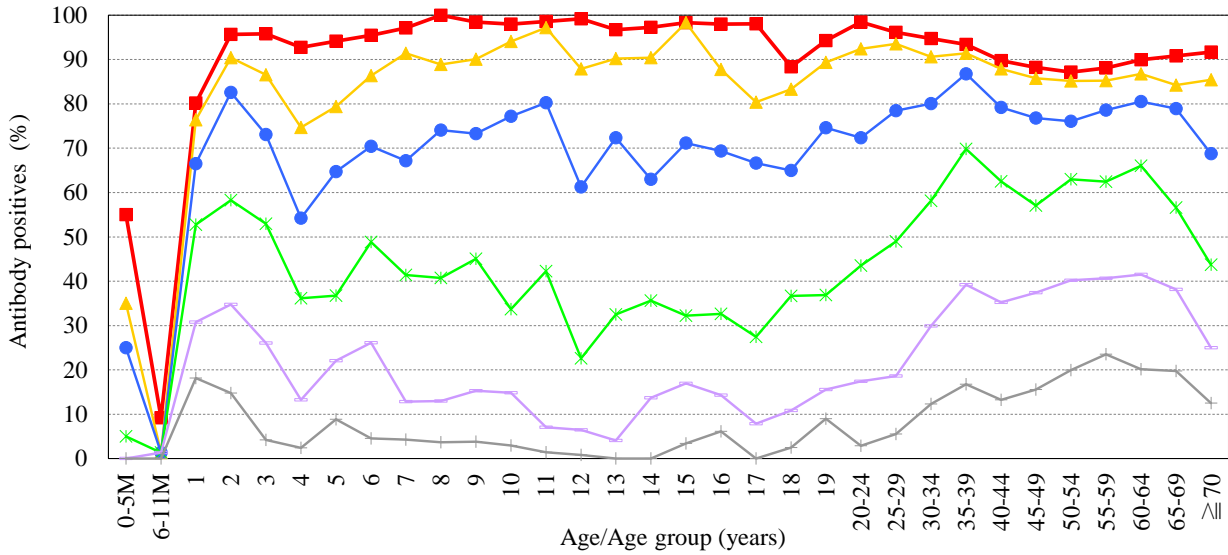
Age distribution of rubella HI antibody positives in Japan, 2019

— National Epidemiological Surveillance of Vaccine-Preventable Diseases, 2019 —

(As of July 2020)

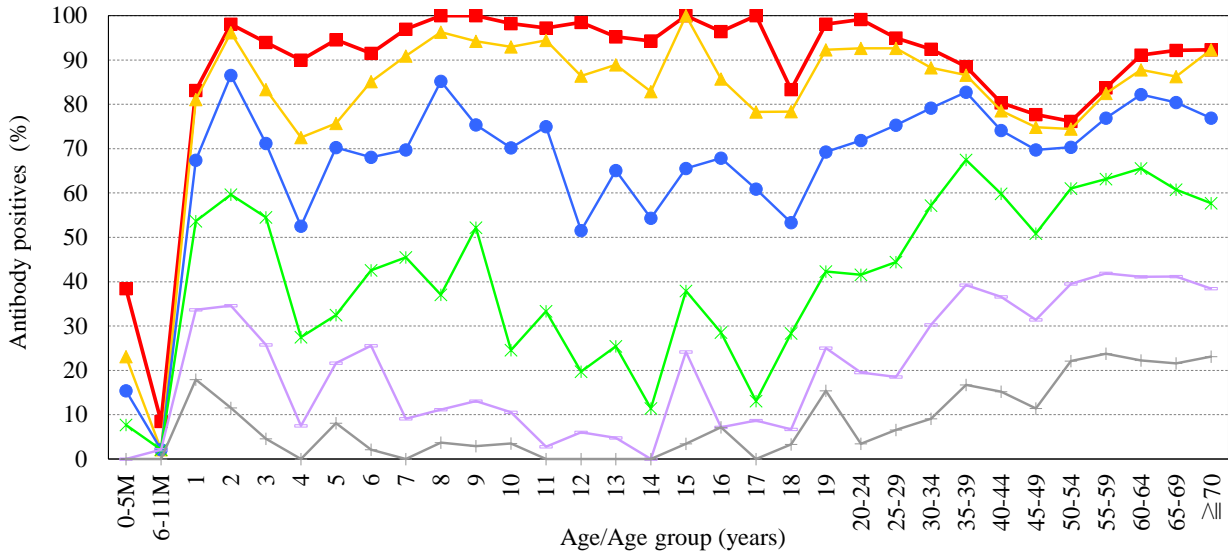
Male & Female

[Examination by hemagglutination inhibition test (HI) ' n = 5,404]



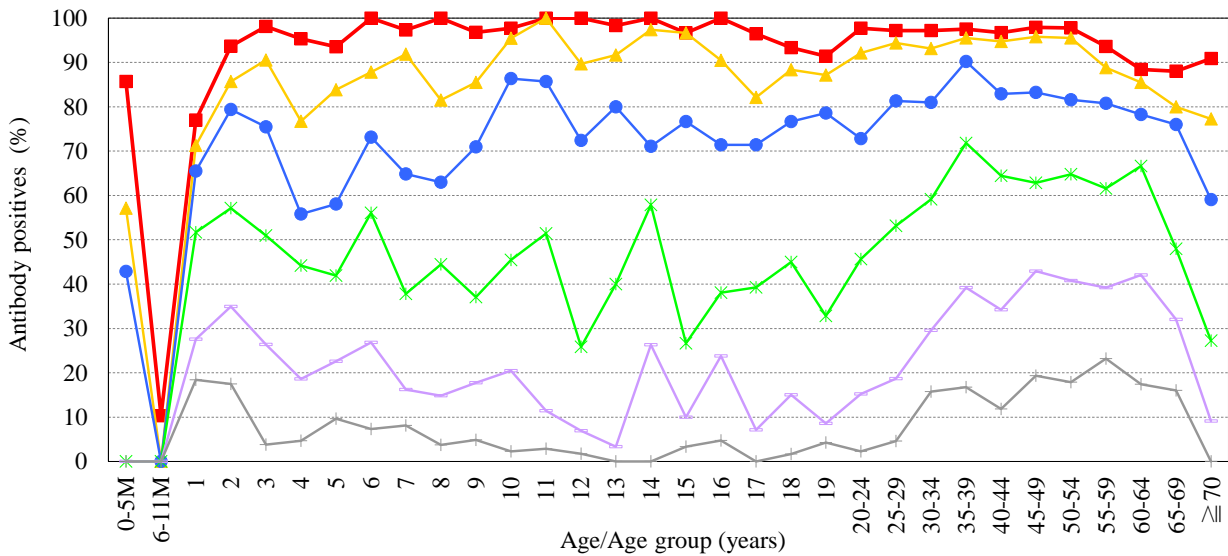
Male

[Examination by hemagglutination inhibition test (HI) ' n = 2,724]



Female

[Examination by hemagglutination inhibition test (HI) ' n = 2,680]



HI titer ■ ≥ 1:8 ▲ ≥ 1:16 ● ≥ 1:32 * ≥ 1:64 + ≥ 1:128 × ≥ 1:256