

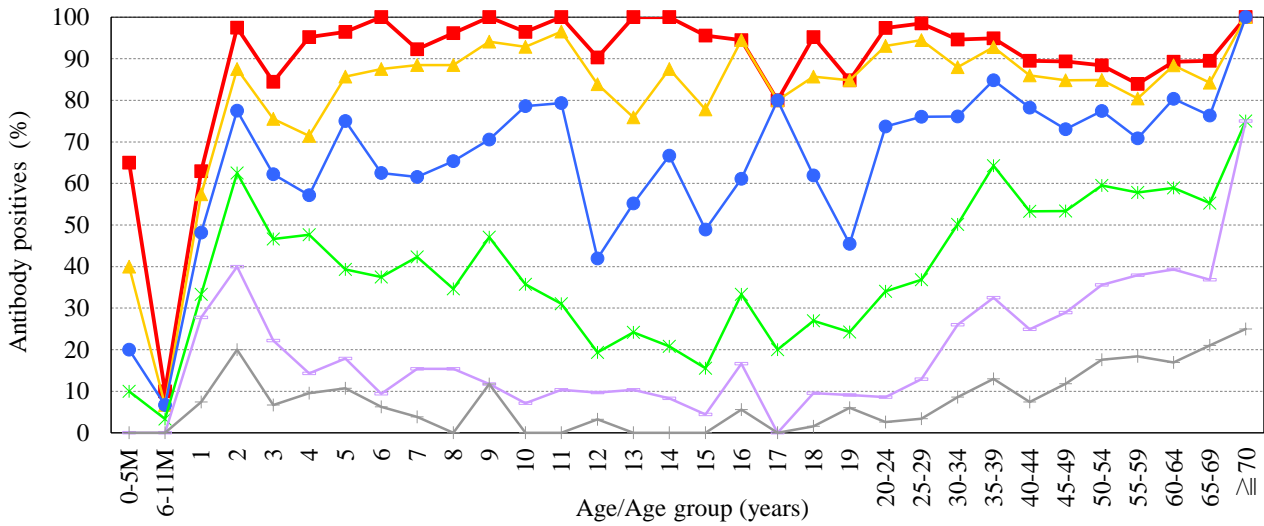
# Age distribution of rubella HI antibody positives in Japan, 2020

— National Epidemiological Surveillance of Vaccine-Preventable Diseases, 2020 —

(As of April 2021)

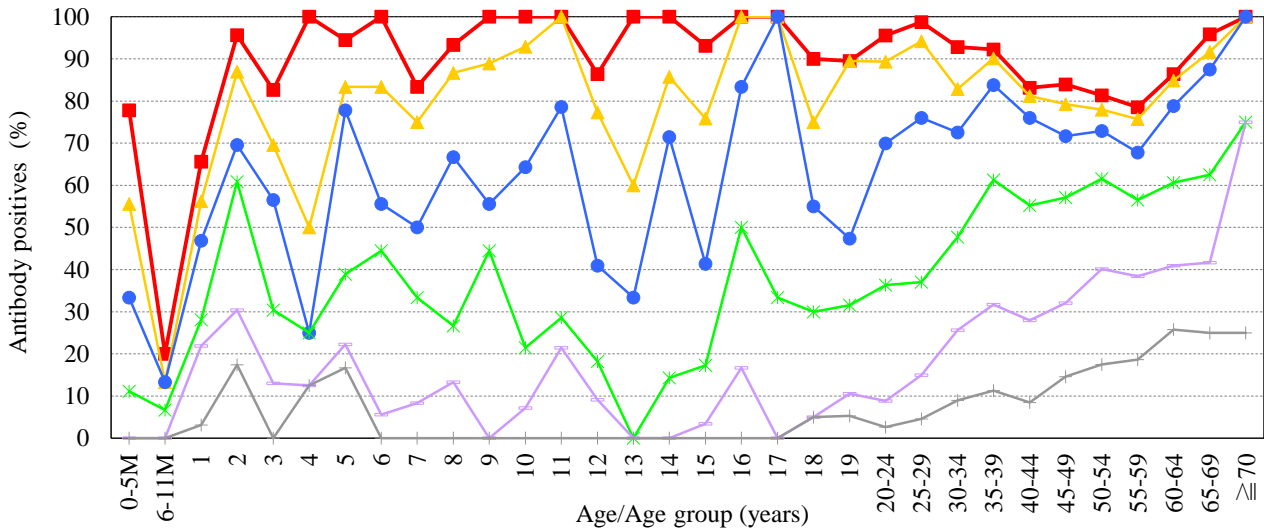
## Male & Female

[ Examination by hemagglutination inhibition test (HI) / n = 3,164 ]



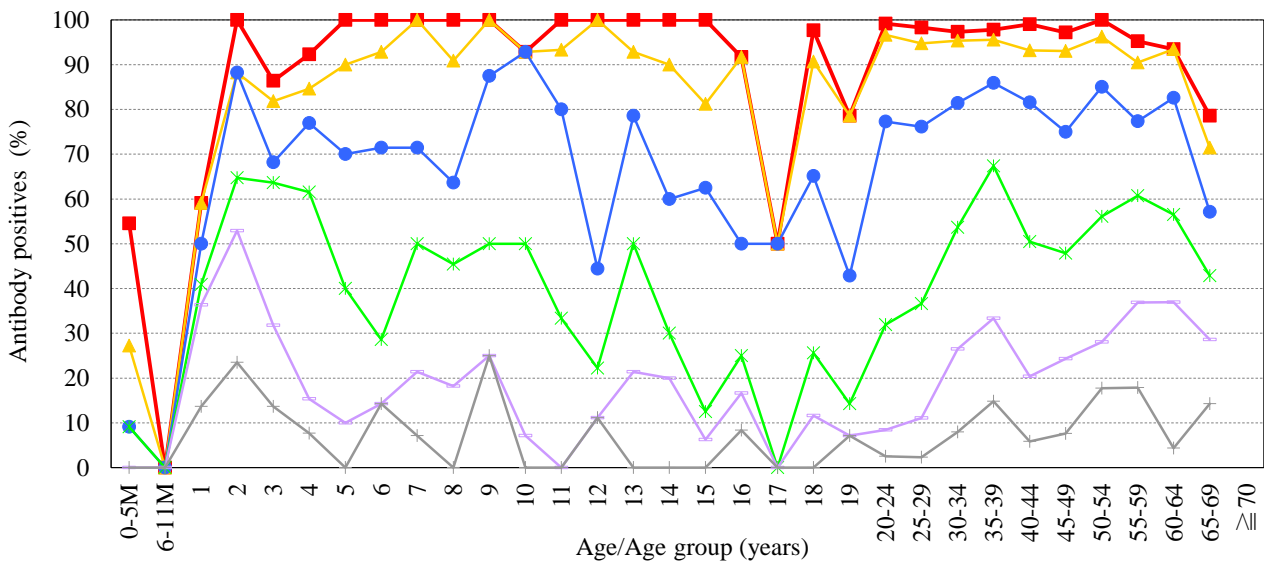
## Male

[ Examination by hemagglutination inhibition test (HI) / n = 1,783 ]



## Female

[ Examination by hemagglutination inhibition test (HI) / n = 1,381 ]



HI titer    ■  $\geq 1:8$     ▲  $\geq 1:16$     ●  $\geq 1:32$     \*  $\geq 1:64$     +  $\geq 1:128$     ×  $\geq 1:256$