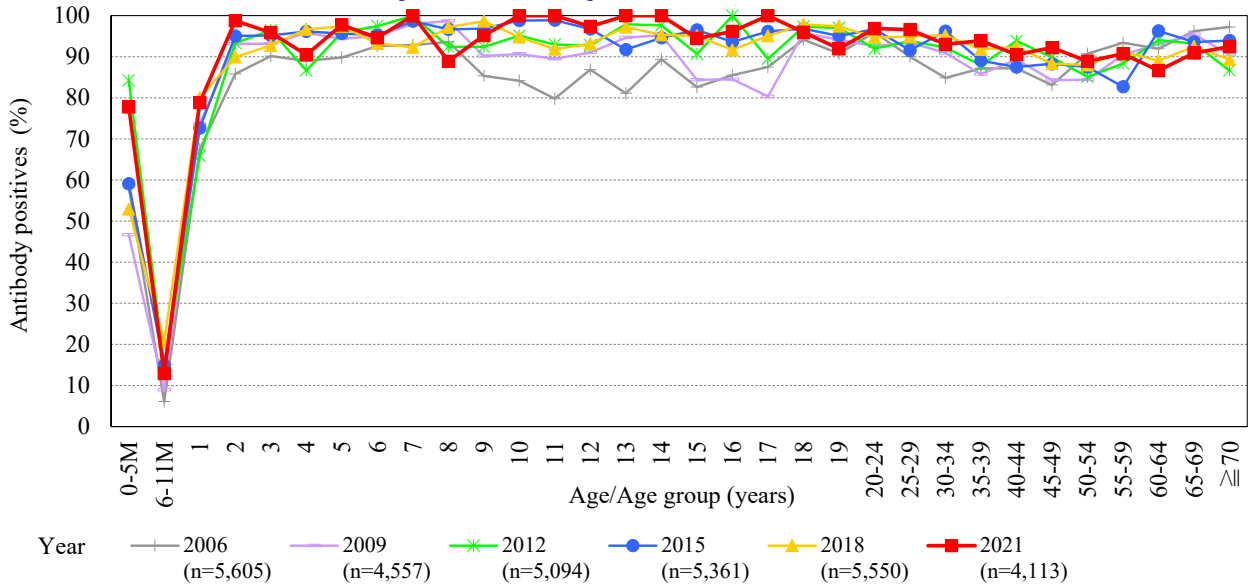


Age distribution of rubella HI antibody positives in Japan, 2006~2021

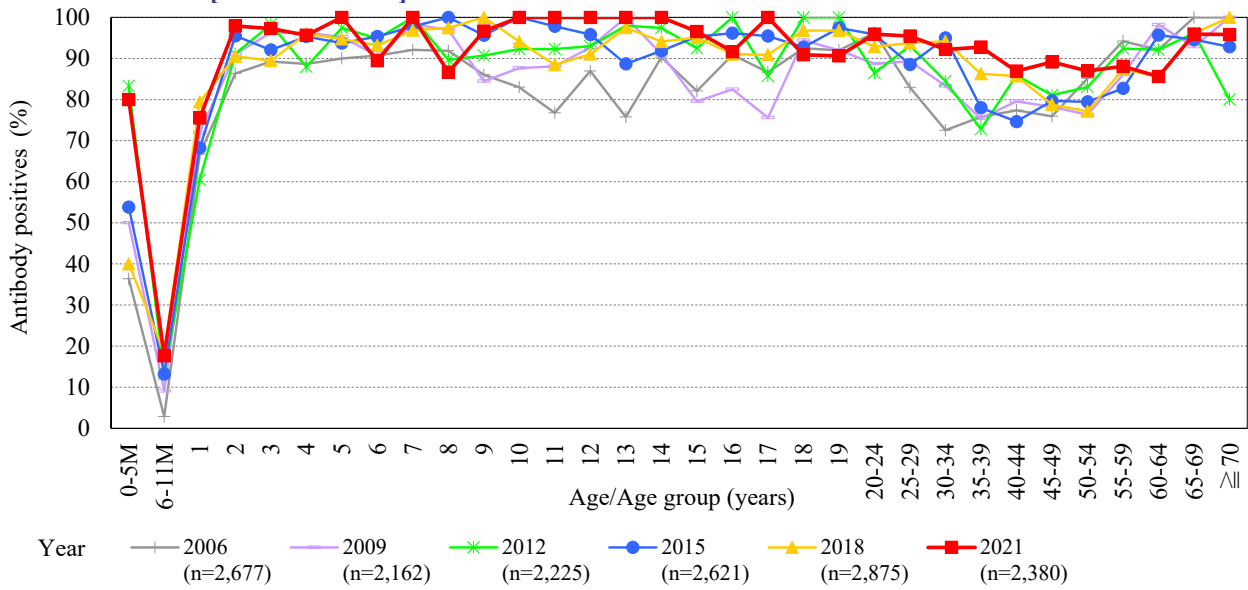
— National Epidemiological Surveillance of Vaccine-Preventable Diseases, 2021 —

(As of April 2022)

Male & Female [HI titer $\geq 1:8$] [Examination by hemagglutination inhibition test (HI)]



Male [HI titer $\geq 1:8$] [Examination by hemagglutination inhibition test (HI)]



Female [HI titer $\geq 1:8$] [Examination by hemagglutination inhibition test (HI)]

