

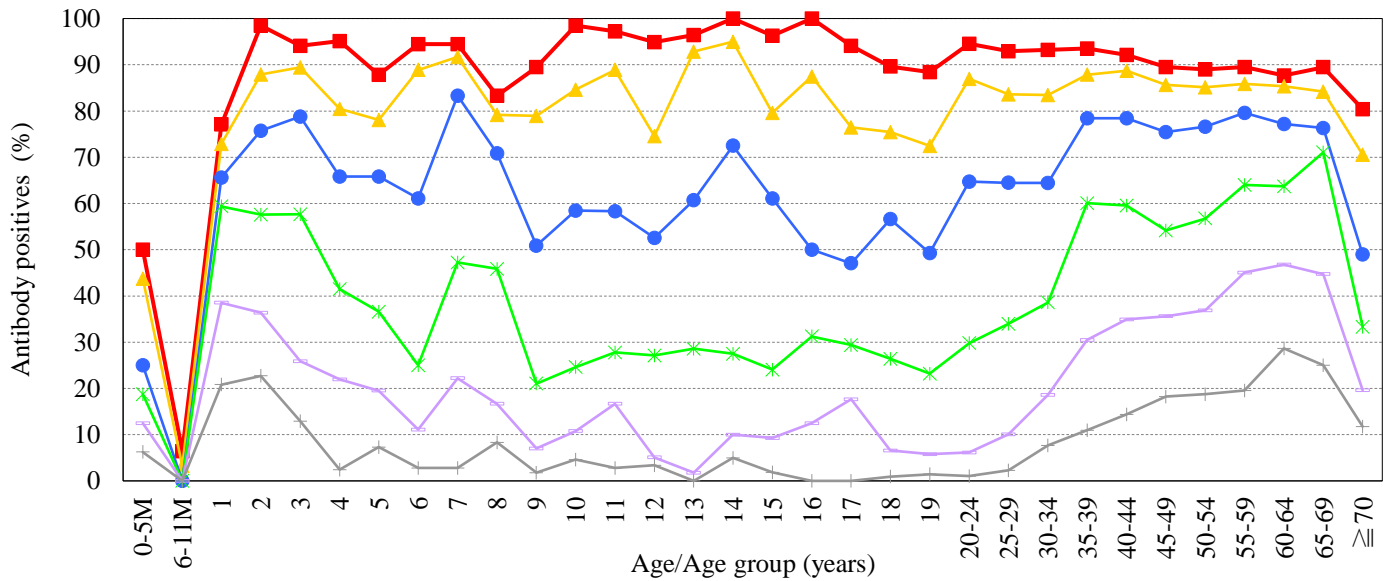
Age distribution of rubella HI antibody positives in Japan, 2022

— National Epidemiological Surveillance of Vaccine-Preventable Diseases, 2022 —

(As of April 2023)

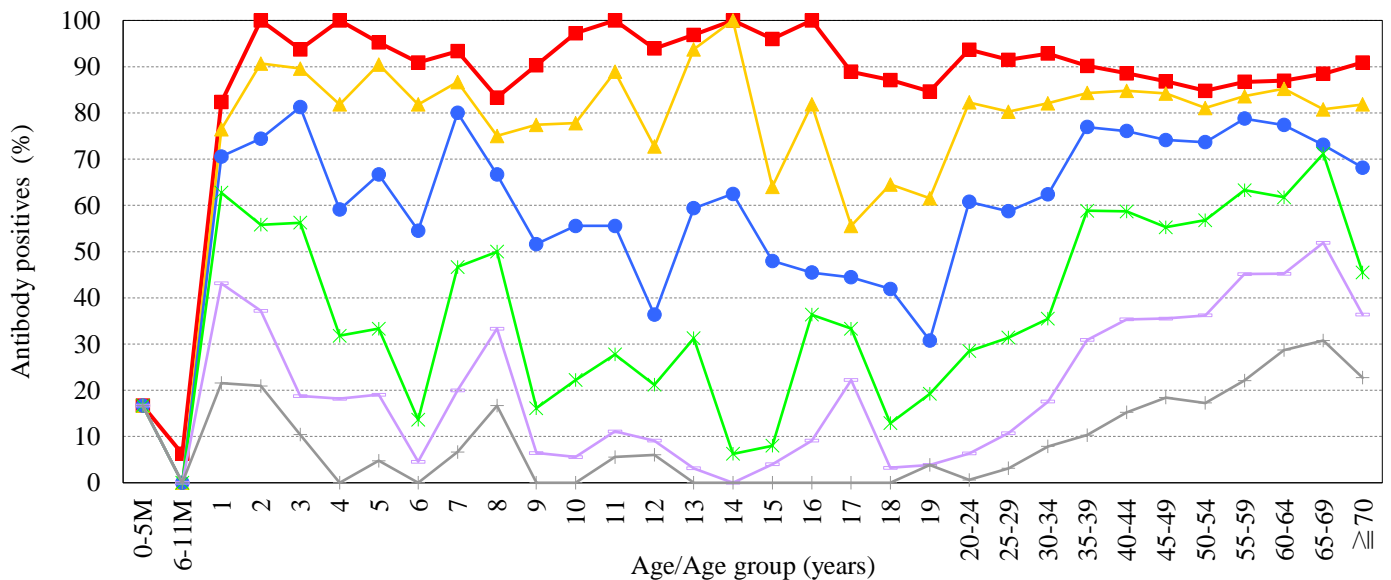
Male & Female

[Examination by hemagglutination inhibition test (HI) / n = 4,144]



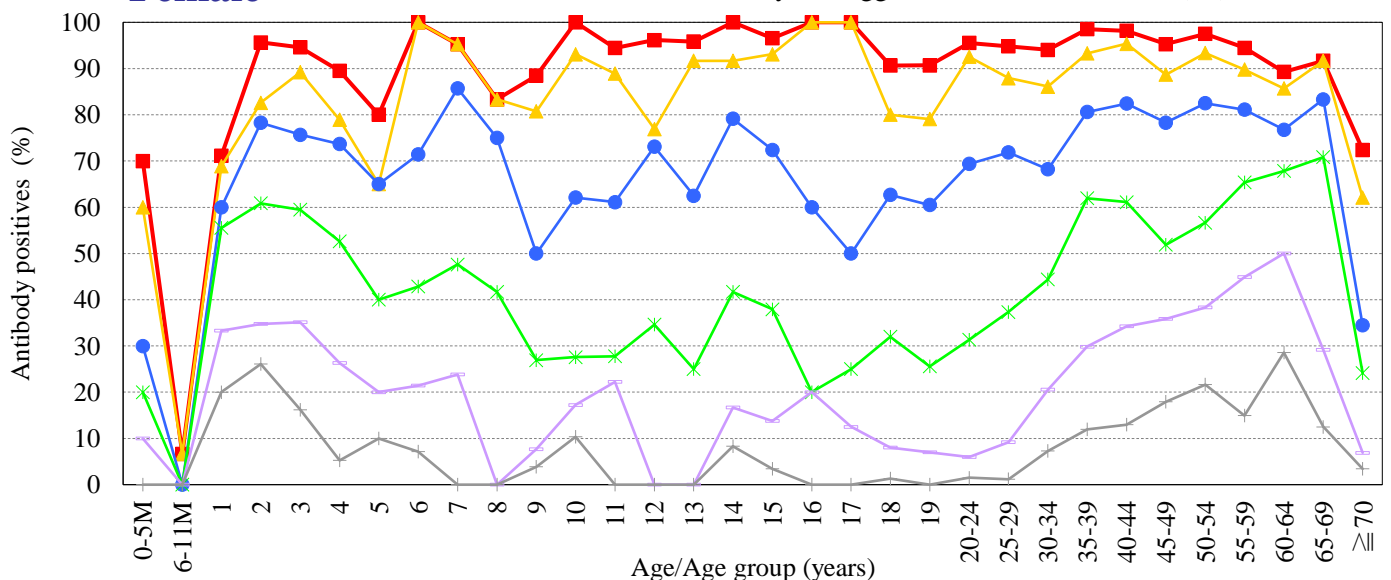
Male

[Examination by hemagglutination inhibition test (HI) / n = 2,458]



Female

[Examination by hemagglutination inhibition test (HI) / n = 1,686]



HI titer ■ $\geq 1:8$ ▲ $\geq 1:16$ ● $\geq 1:32$ * $\geq 1:64$ + $\geq 1:128$ × $\geq 1:256$

NESVPD2022