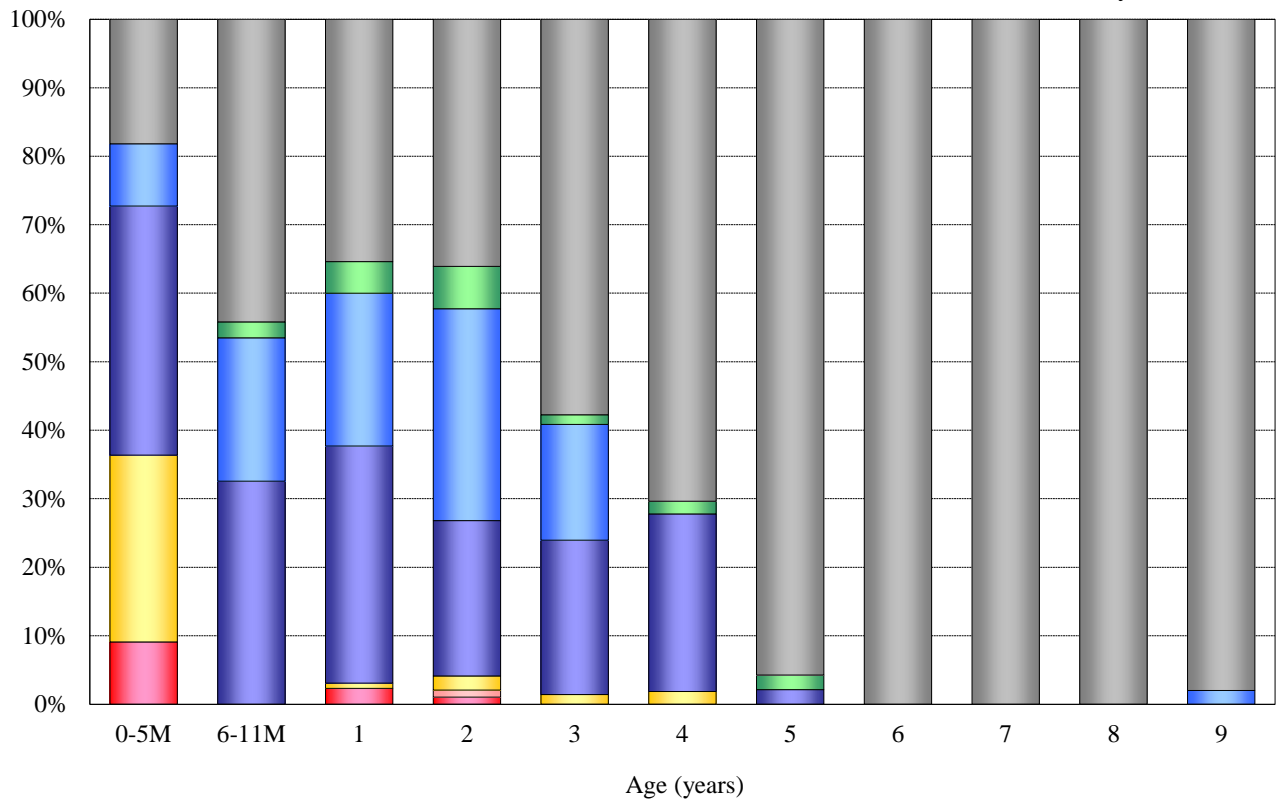


Age distribution of Rotavirus vaccination history in Japan, 2016

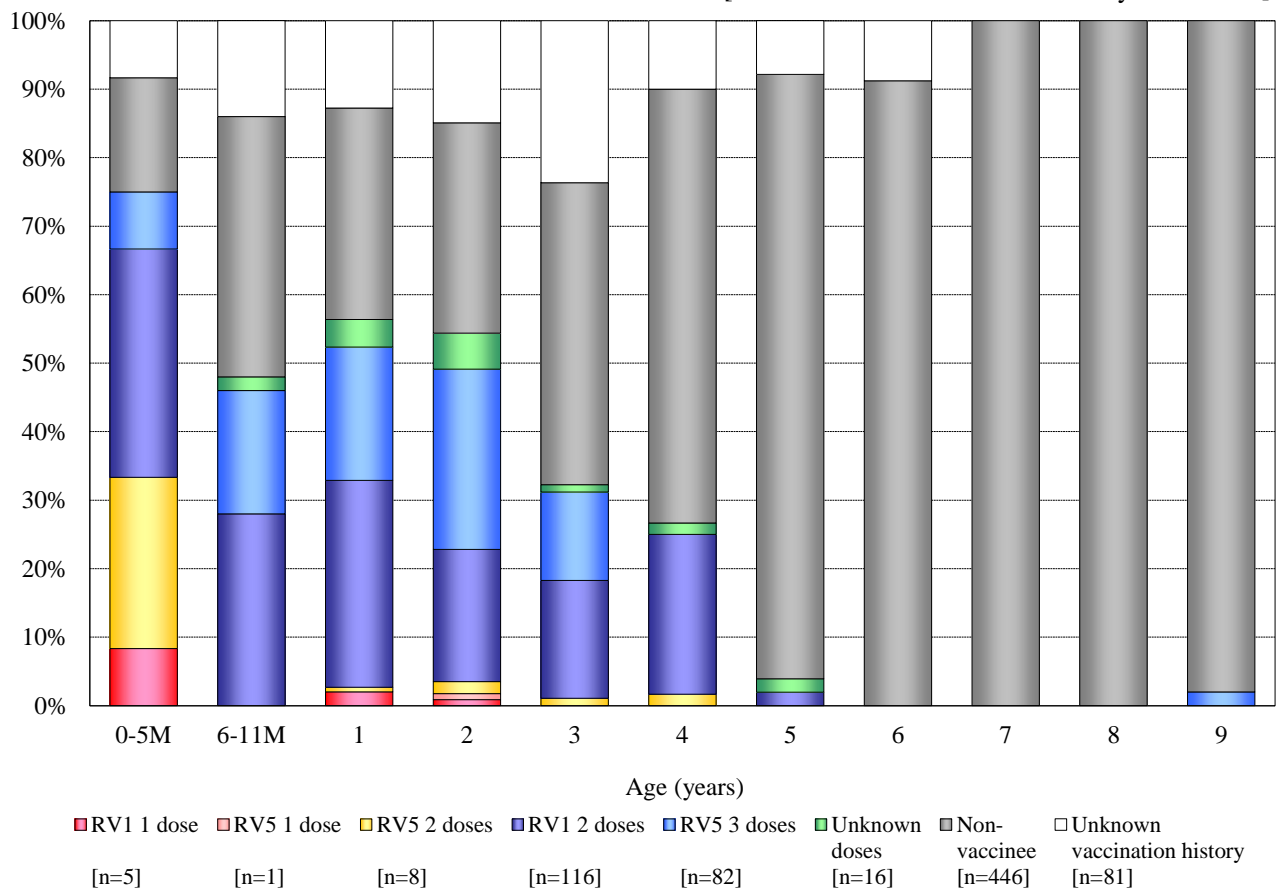
— National Epidemiological Surveillance of Vaccine-Preventable Diseases, 2016 —

(As of June 2020)

[**Without** unknown vaccination history / n = 674]



[**With** unknown vaccination history / n = 755]



■ RV1 1 dose [n=5]
 ■ RV5 1 dose [n=1]
 ■ RV5 2 doses [n=8]
 ■ RV1 2 doses [n=116]
 ■ RV5 3 doses [n=82]
 ■ Unknown doses [n=16]
 ■ Non-vaccinee [n=446]
 Unknown vaccination history [n=81]